

# WONDERWALL STUDIOS

INSTALLATION MANUAL

GENERAL

# WONDERWALL STUDIOS

## GENERAL INSTALLATION INSTRUCTIONS

### INTRODUCTION

Congratulations! You have acquired your very own piece from the collection of Wonderwall Studios. Put at it's simplest, this means that you are about to adorn your walls with the most characterful hardwoods the world has to offer. You join a select group of discerning collectors of our work, and as is increasingly being recognised, investors in design that will inspire now and for years to come.

The beauty of our panels is not confined to their appearance. They have been thoughtfully designed so that all levels of decorator can achieve a professional finish. This manual will now guide you through the installation process in five simple steps from page 4 onwards.

### TWO GOLDEN RULES

The two golden rules for the best result are:

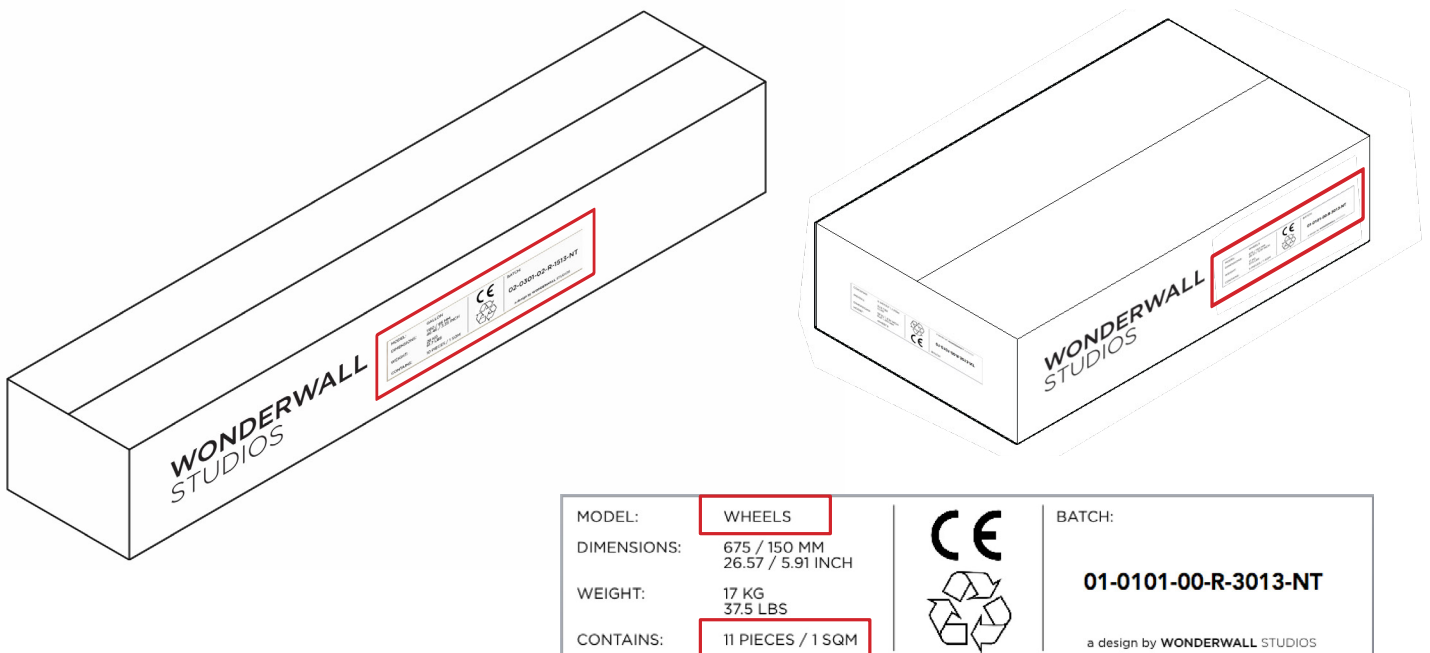
**1 Paint your receiving wall prior to installation in the color of the selected wall panel type**

**2 Place the wall panels in a random bond**

You will find these golden rules clearly marked in bold writing furtheron in this installation manual.

### OWNER / INSTALLER RESPONSIBILITY

All of our panels are thoroughly inspected to ensure that you receive only the very finest specimen hardwoods nature has to bestow. As all of our materials are natural however some natural variations in grading may occur. It is the installer's responsibility to check the suitability of all panels prior to installation. In the highly unlikely event that any defects are found to be present, you should contact your supplier immediately. Do not install panels you suspect to be defective as we cannot accept returns once panels have been installed.



It is the installer's responsibility to ensure that the project site is suitable and that the panels are correctly installed (for which see later). The manufacturer accepts no responsibility for failure due to incorrect or inappropriate installation.

# WONDERWALL STUDIOS

## PROJECT SITE - INSPECTION

The Wonderwall Studios collection is suitable solely for indoor installation. The project site should be fully enclosed to the elements and all receiving walls should be completely dry. For further details on the project site inspection, please read our document "Project site and receiving wall requirements".

## THE RECEIVING WALL

Our wall panelling may be applied to a range of receiving surfaces. For the best results we recommend fixing to an even surface. Flat walls are ideal but by no means vital; a small degree of unevenness is acceptable and will not cause problems.

## CONDITION OF RECEIVING WALL - GENERAL

In general, surfaces should be clean and free from any loose material or debris. They should be completely dry and structurally capable of supporting the aggregate panel weight, together with that of any backing strata (where used). For the best result it is recommended to **paint the receiving wall in the color of the selected wall panel type** before mounting.

## CHECKLIST TOOLS AND ACCESSORIES NEEDED

Here is a quick look at the tools you will need for the job.

All installations

Broom and/or vacuum, spirit level and/or cross laser level, handsaw, table saw and/or crosscut saw, tape measure, pencil, utility knife, extension cord, ladder and personal protective equipment.

Add for mounting with adhesive

Silicon gun and elastic MS polymer High Tech.

Add for mounting with tacker

Tacker, brads 1.2 mm thickness and 30-50 mm depending on the wall panelling type being installed.

## LARGE SURFACE AREAS

### EXPANSION JOINTS IN BUILDING STRUCTURE

For both mounting using adhesives or using a tacker in projects with large surface areas it is always advised to accommodate the expansion joints in the building structure by allowing the same expansion space in the wall panelling. This space may be filled with a flexible sealant.

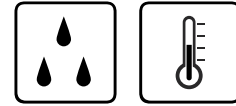
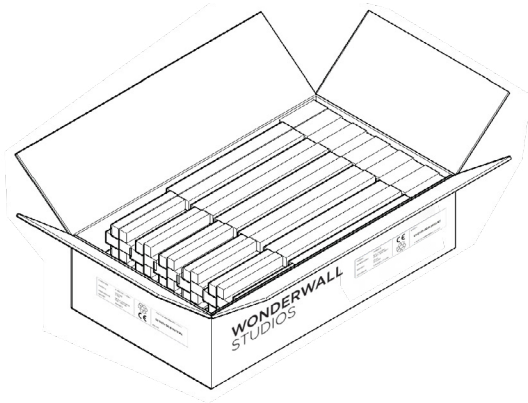
### LAYOUT AND EXPANSION SPACE

When the wall panelling area exceeds 10 meters (33') in width and/or 30 meters (100') in length, additional expansion space must be incorporated into the field, as well as at the perimeter and all obstructions.

# WONDERWALL STUDIOS

## INSTALLING REGULAR WALL PANELS

### STEP 1 HANDLING AND ACCLIMATIZING YOUR WALL

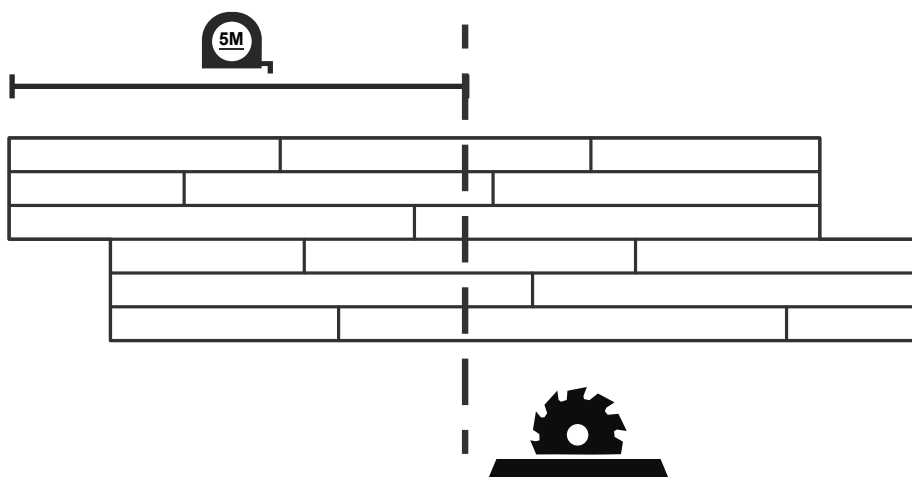


**2 WEEKS**

Unload and handle panels with care. For best results, we recommend that you store panels in their new environment for a period of one week prior to installing them. Wood is a natural material which reacts to it's environment, therefore a degree of shrinkage or expansion may be expected depending on the nature of the panels' new home. Allowing the panels to acclimatize in this way prior to installation means that the wood will have significantly stabilized before it is affixed to the wall. A better finish may therefore be achieved.

Panels should not be delivered to site unless and until the building is completely closed to the elements.

### STEP 2 THE FIRST PANEL



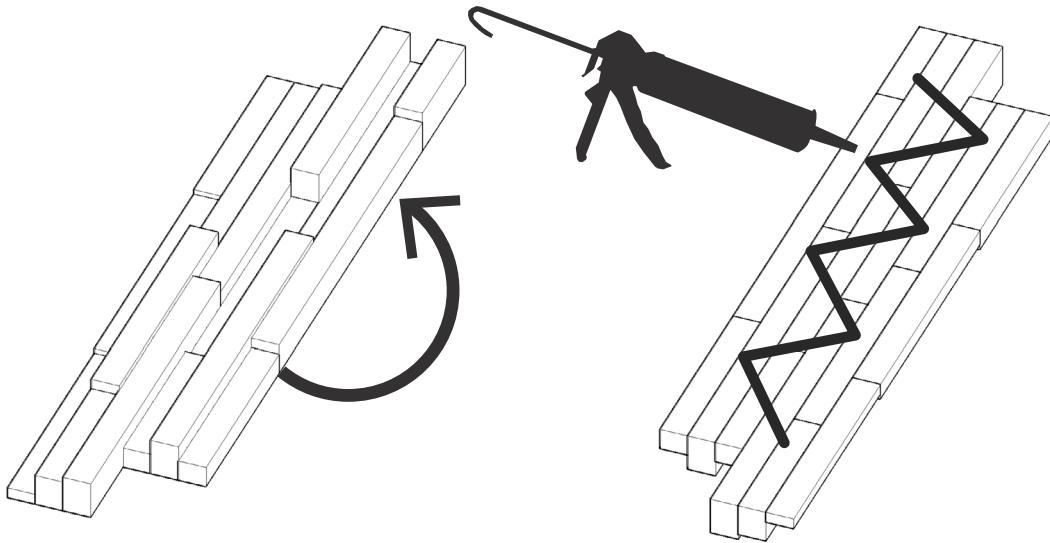
For the most efficient coverage, cut the first panel directly in half, widthways (with a tablesaw or a cross-cut saw). Taking one of the resultant half panels, align the newly created straight edge with the left edge of the wall and fix in place.

The other newly created half panel may be used to start subsequent rows as described in step 5.



# WONDERWALLSTUDIOS

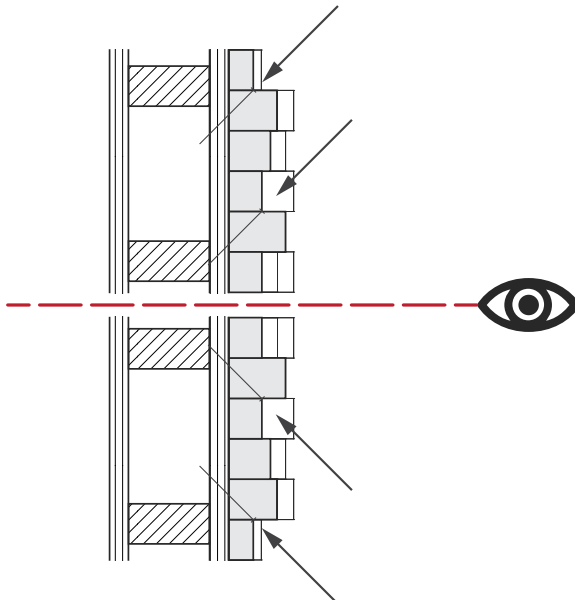
## STEP 3 MOUNTING USING ADHESIVE



Panels may be mounted to a range of surfaces using the correct fixing medium and in most cases we recommend using a strong elastic MS polymer adhesive High Tech. As a guide, you will require roughly 290 ml adhesive for every 2 sqm of panelling.



## MOUNTING USING TACKER

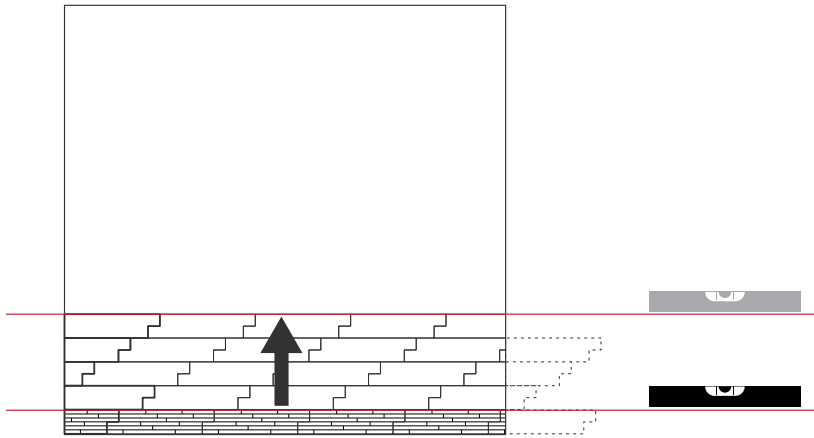


Where panels are to be installed onto a wooden backing surface, a tacker device may be used as an alternative (or in addition) to a polymer adhesive. For best results when using a tacker, take care to ensure that the appearance of the brads is minimised. When affixing wall panels above eye-level, brads should be 'shot' at a downwards angle. For panels below eye-level, shoot the brads at an upwards angle. Brads at eye-level should be shot into corners of the panel and between the lats.



# WONDERWALLSTUDIOS

## STEP 4 PLACING THE FIRST ROWS OF YOUR WALL



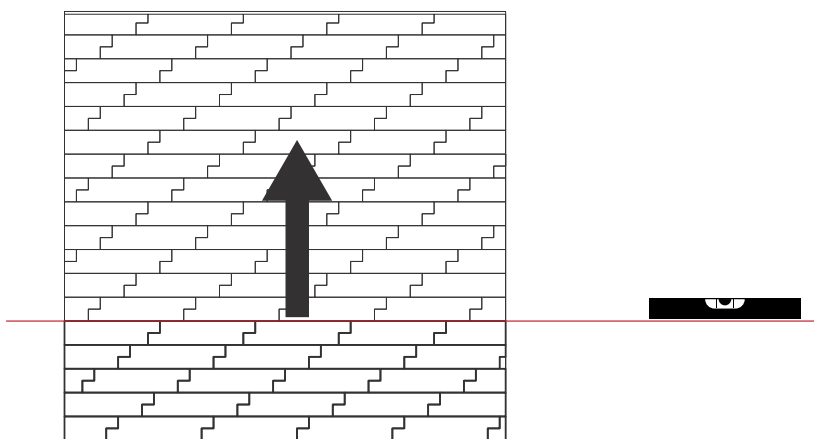
Position the first panels in a straight row along the wall. We recommend using a spirit level or cross laser to mark a straight line on the wall as a guide before positioning the panels. Place the first half-panel on the left side of the wall in the manner described in step 2 and follow the spirit line. With this golden rule #2 a **random bond** is created which makes the joints disappear.

Continue with the other panels until you reach the end of the row, using a tablesaw or a cross-cut saw to cut the final panel to size. The leftover piece of panel may be used to start the second row. For best results, we recommend an irregular panel formation; that is to say that you do not exactly repeat the formation of the panels in successive rows.

After installation of the first 5 rows check that straight lines have been maintained, correcting if necessary.



## STEP 5 MOUNTING YOUR WALL



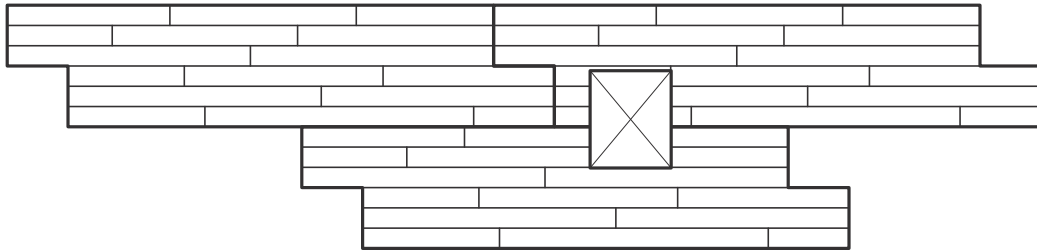
Place the panels in an irregular (mixed) formation and work first upwardly in rows until you come to the top of the wall. In each row, the leftover portion of panel from the end of one row may be used as the starting panel for the following row. Remember that this is subject to it's suitability to maintain the overall irregular formation; where it is not suitable, cutting to an alternative size should make it so.



# WONDERWALL STUDIOS

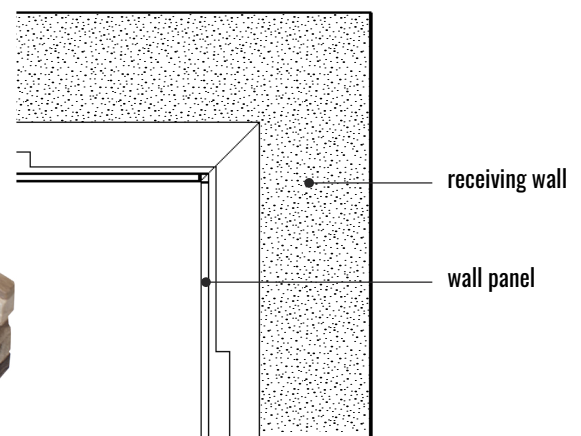
## SPECIAL SOLUTIONS

### SPECIAL SOLUTIONS POWERSOCKETS AND LIGHT SWITCHES



Light switches and power sockets can be integrated by cutting a hole within the panel. Always measure carefully before cutting the hole.

### INTERNAL CORNER SOLUTIONS WOOD HORIZONTAL

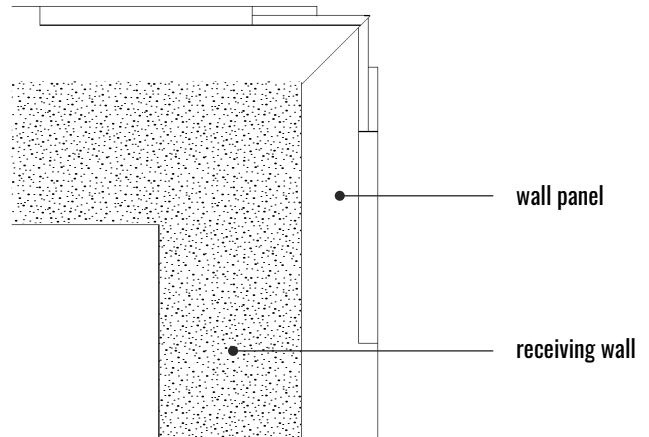


In case of an internal corner a seamless unbroken row of panels is achieved by joining corresponding panels using a mitered edge. Connect the return wall using the leftover piece from the joining panel.

# WONDERWALL STUDIOS

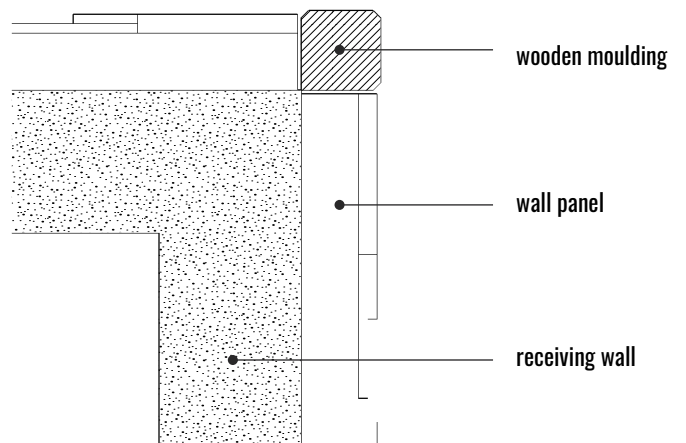
## EXTERNAL CORNER SOLUTIONS

## WOOD HORIZONTAL



A seamless corner/unbroken row of panels is achieved by joining corresponding panels using a mitered edge. Connect the return wall using the leftover piece from the joining panel.

## EXTERNAL CORNER SOLUTIONS WOOD HORIZONTAL



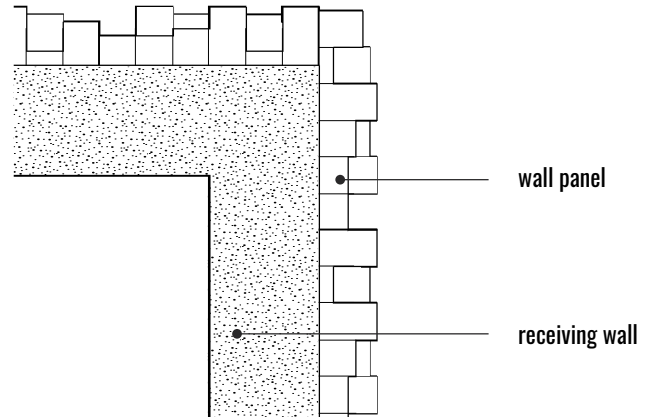
Using a square wooden moulding will delineate joining walls and put a strong emphasis on the corner itself. We recommend that you use a well matched wood type for this solution.



# WONDERWALL STUDIOS

## EXTERNAL CORNER SOLUTIONS

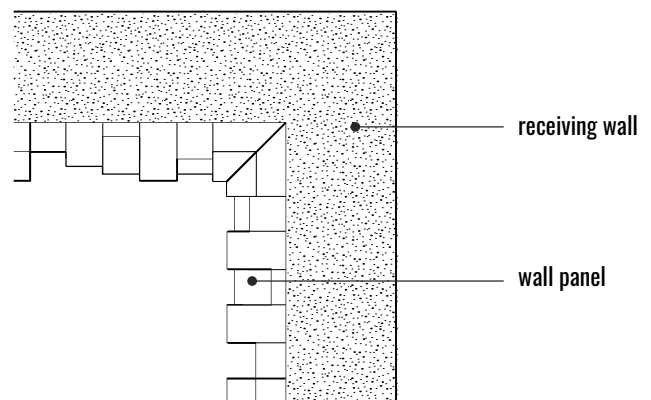
## WOOD VERTICAL



If a vertically placed corner solution is preferred we recommend one row of the wall panel overlap so the side of one for the panels is visible.

## INTERNAL CORNER SOLUTIONS

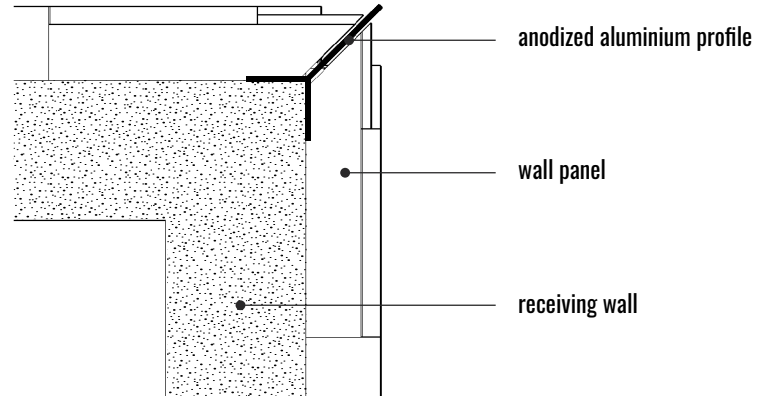
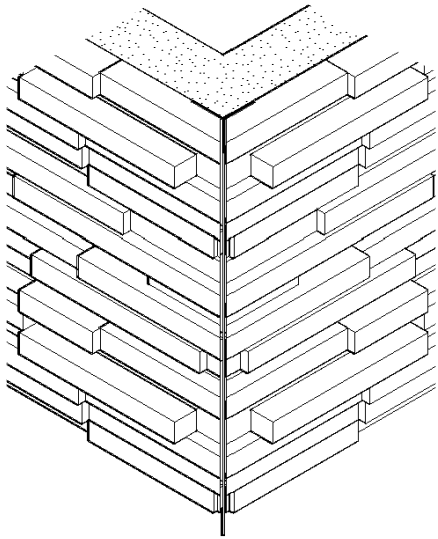
## WOOD VERTICAL



In case of an internal corner a seamless unbroken row of vertical panels is achieved by joining corresponding panels using a mitered edge. Connect the return wall using the other half piece from the joining panel.

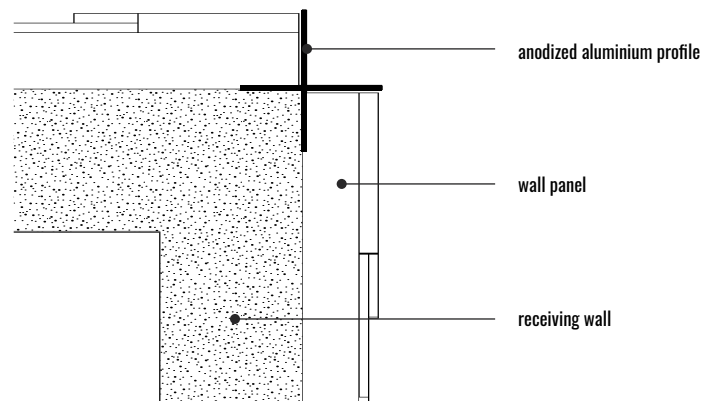
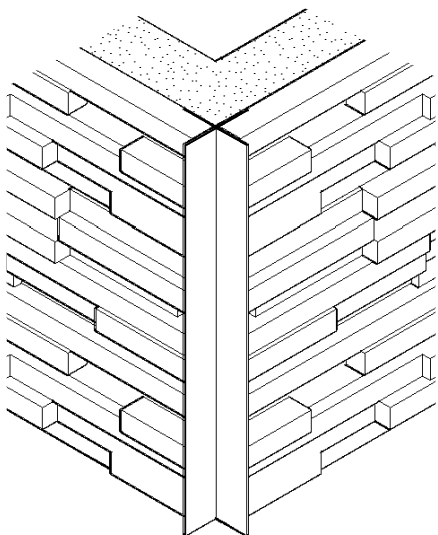
# WONDERWALL STUDIOS

## EXTERNAL CORNER SOLUTIONS METAL



If a narrower, corner-defining solution is preferred we recommend using an anodised or powder coated aluminium profile of 4 mm thickness, positioned within the miter joint.

## EXTERNAL CORNER SOLUTIONS METAL



For this open corner solution we recommend using an anodised or powder coated aluminium profile of 50x50 mm.

# WONDERWALLSTUDIOS

## DISCLAIMER

Our panels are made entirely of authentic, reclaimed hardwoods from a variety of sources. Wood is a natural material that contains distinctive characteristics in grain, colour and texture. Photographs and physical samples should be viewed as illustrative of the collection they represent; in no way should they be regarded as being definitive or of guaranteeing an exact match. Each individual panel is unique.

Please note that no returns are offered for product that has been installed. With this in mind we always advise that you take the opportunity to experiment with different panel arrangements prior to final installation.

Your statutory rights are not affected.

For the latest version of this document please contact Wonderwall Studios.

# WONDERWALLSTUDIOS

Wonderwall Studios designs and produces wood panels for walls and other surfaces. Since our start back in 2010 we have always gone the extra mile. For our clients of course, but also to find the best and most beautiful reclaimed woods.

We love working with reclaimed woods, so much so that if the wood is not reclaimed, we won't touch it.

This sustainability principle forms not only the foundation of our business; it is its beating heart.

We're proud of this but also see it as something that should come naturally to any people working in our line of business.

[WONDERWALLSTUDIOS.COM](http://WONDERWALLSTUDIOS.COM)